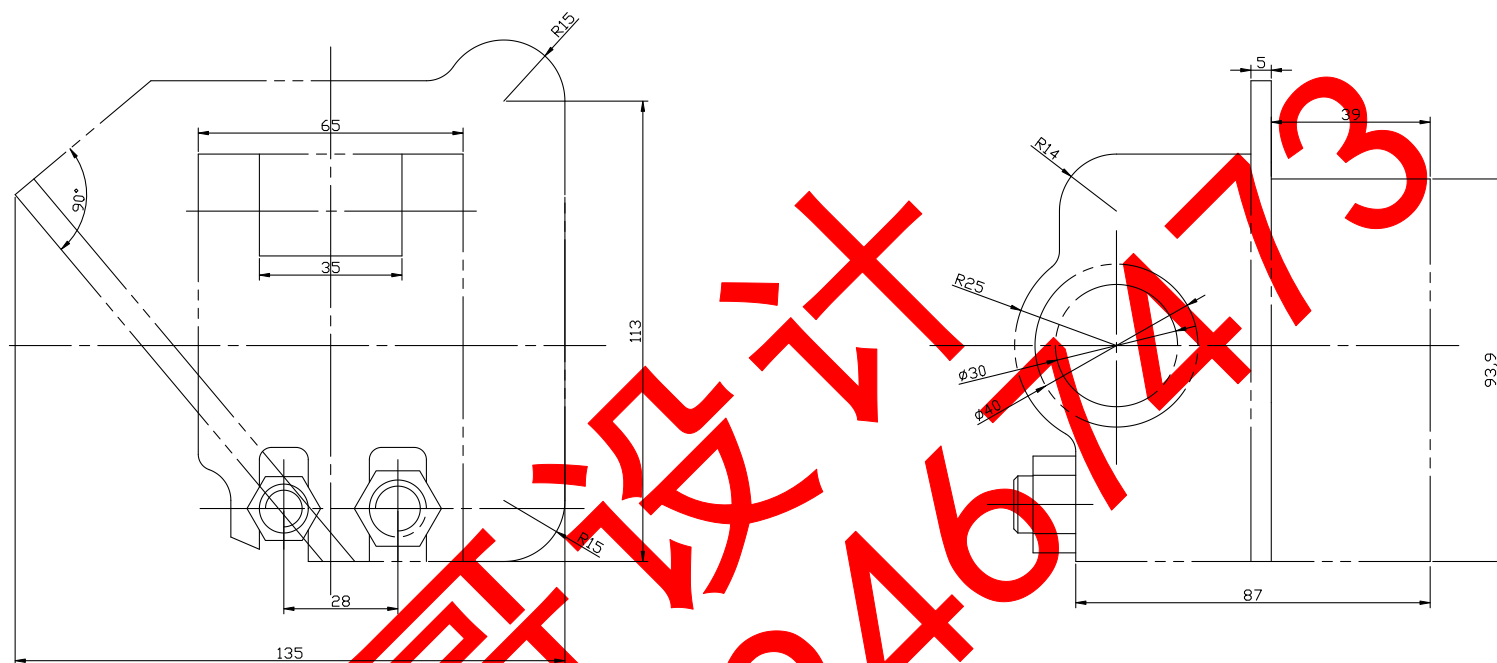


A2-某机型铰链座零件图

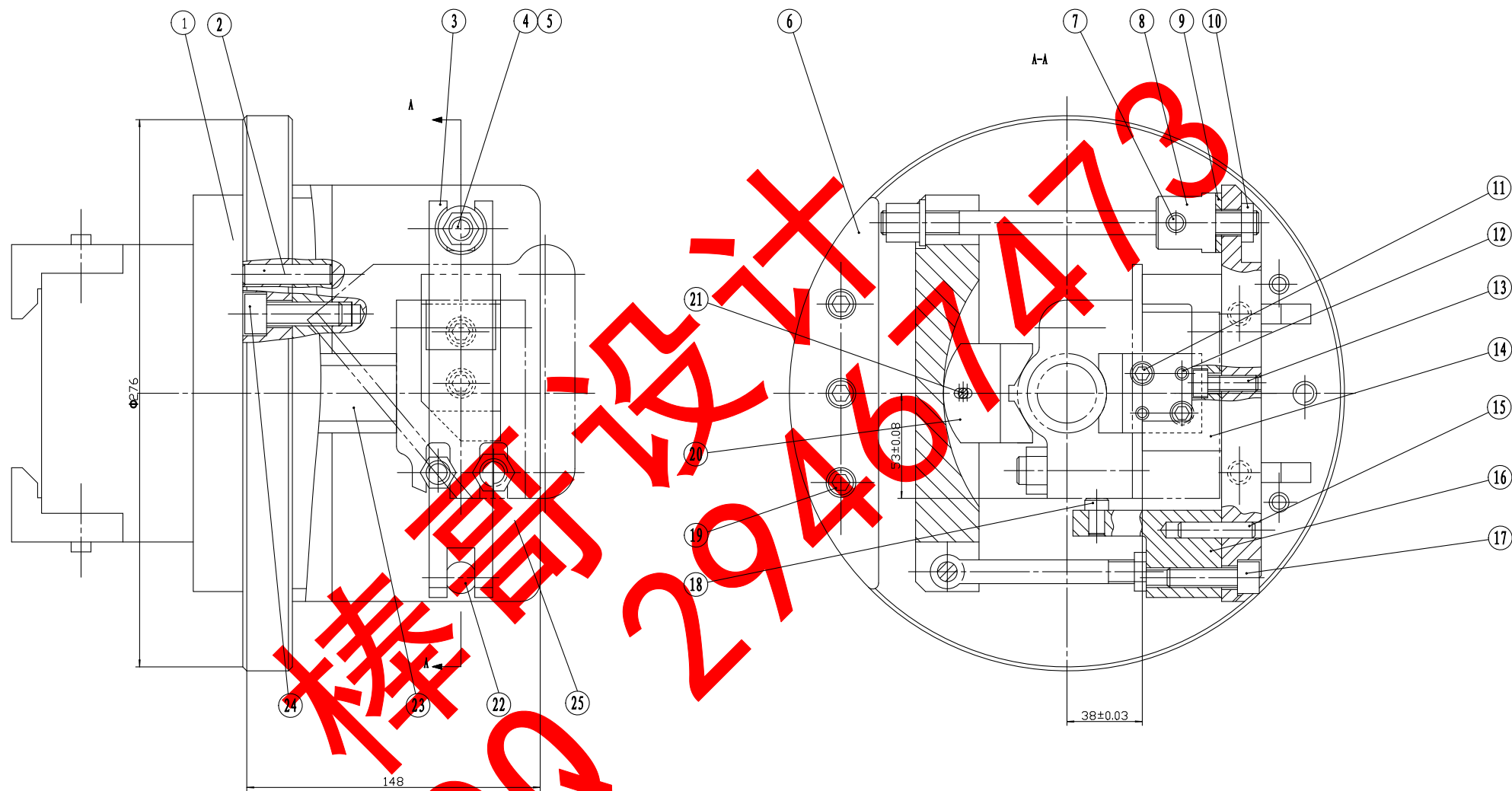


●●

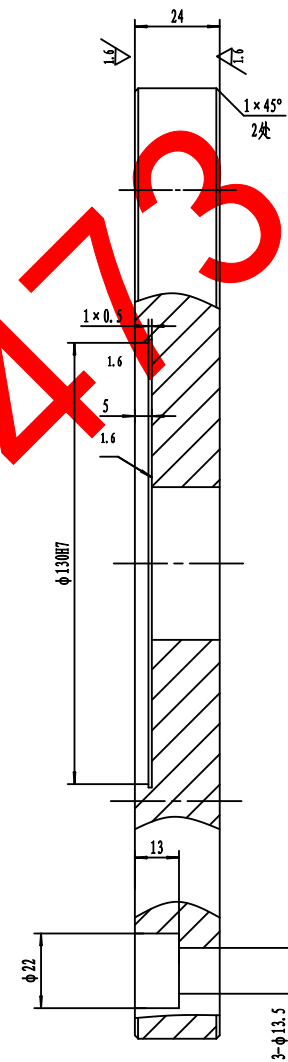
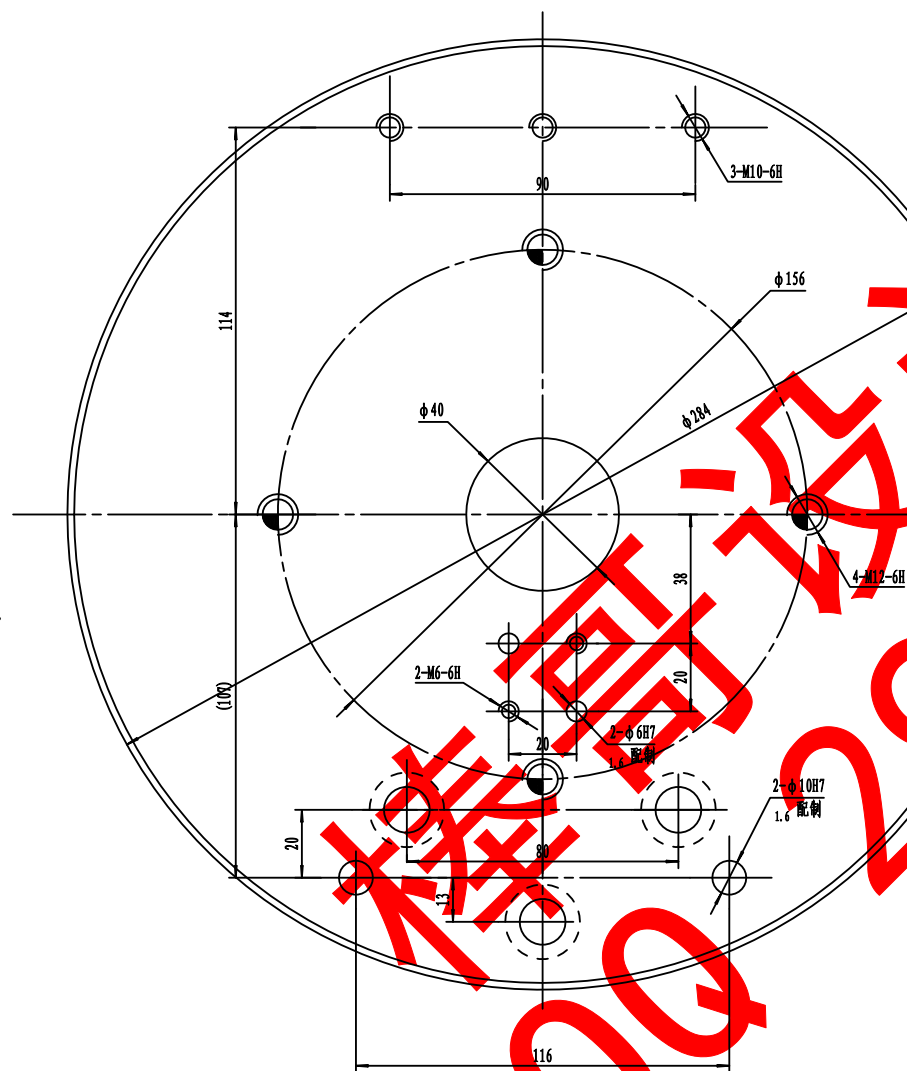
- 1、未注倒角 $1.5\times 45^\circ$

| | | | | | | | | | | | |
|----|----|-----|-------|----|-------|-----------|----|----|----|--------|--|
| | | | | | | 30CrMnSiA | | | | | |
| | | | | | | | | | | | |
| | | | | | | | | | | | |
| 标记 | 处数 | 分 区 | 更改文件号 | 签名 | 年 月 日 | | | | | | |
| 设计 | | | 标准化 | | | 阶段标记 | 数量 | 重量 | 比例 | 某机型铰链座 | |
| | | | | | | | | | | | |
| 审核 | | | | | | | | 1 | | 1:2 | |
| 工艺 | | | 批准 | | | 共 张 第 张 | | | | | |

A1-夹具装配图

[illegible]

A2-底盘[夹具体]



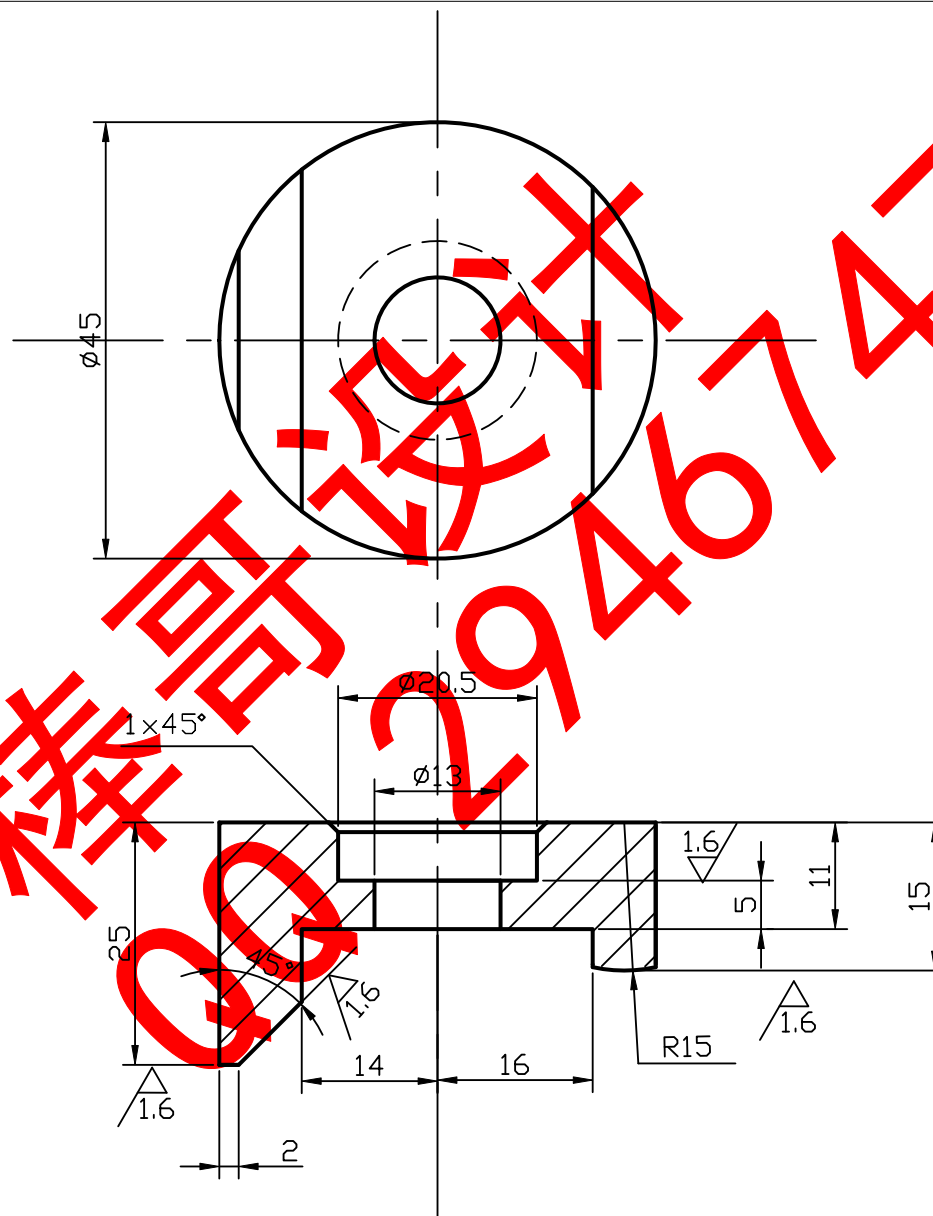
注: 1. 括号尺寸按总图协调制造;
2. 锐边倒圆。

[illegible]

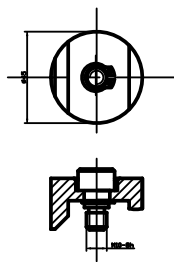
Technical drawing of a mechanical part, showing a cross-section and a top view. The drawing includes dimensions and a large red watermark reading "样图设计 29461473".

Dimensions and Features:

- Top View:**
 - Outer diameter: $\phi 45$
 - Inner hole diameter: $\phi 13$
 - Central hole diameter: $\phi 20.5$
- Front View:**
 - Overall height: 15
 - Overall width: 25
 - Top flange thickness: 11
 - Bottom flange thickness: 5
 - Bottom flange radius: R15
 - Top flange chamfer: $1 \times 45^\circ$
 - Bottom flange chamfer: $1.6 \times 45^\circ$
 - Internal hole diameter: $\phi 13$
 - Internal hole length: 16
 - Internal hole chamfer: $1.6 \times 45^\circ$



保险钩装置



| | | | | | |
|----|-----|----|------|----------|----|
| 3 | 挡圈 | 1 | 65Mn | GB894-76 | |
| 2 | 螺钉 | 1 | 45# | | |
| 1 | 保险钩 | 1 | 45# | | |
| 序号 | 名称 | 数量 | 材料 | 尺寸 | 页码 |

| | | | | | |
|----|----|----|-------|----|-----|
| | | | | | |
| | | | | | |
| | | | | | |
| 标记 | 处数 | 分区 | 更改文件号 | 签名 | 年月日 |
| 设计 | | | 标准化 | | |
| | | | | | |
| 审核 | | | | | |
| 工艺 | | | 批准 | | |

| | | | | | |
|---------|--|----|----|--|--|
| | | | | | |
| | | | | | |
| | | | | | |
| 阶段标记 | | 重量 | 比例 | | |
| | | | | | |
| 共 张 第 张 | | | | | |

保险钩

Technical drawing of a mechanical part, likely a shaft or pin, showing two views: a front view (top) and a side view (bottom).

Front View (Top):

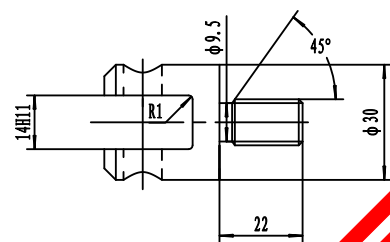
- Overall length: 32
- Left section width: 10
- Right section width: 7
- Left section features a hole with a diameter of $\phi 9.5$ and a chamfer of $3 \times 45^\circ$.
- Right section features a hole with a diameter of $\phi 30$ and a chamfer of $2 \times 45^\circ$.
- Dimension 1.6 is indicated near the right hole.
- Dimension 4 is indicated at the bottom left.
- Thread specification: M12-6g is indicated at the bottom right.

Side View (Bottom):

- Overall length: 22
- Radius: R1 is indicated on the left end.
- Chamfer: 45° is indicated on the right end.
- Internal hole diameter: $\phi 9.5$ is indicated.
- Overall diameter: $\phi 30$ is indicated.

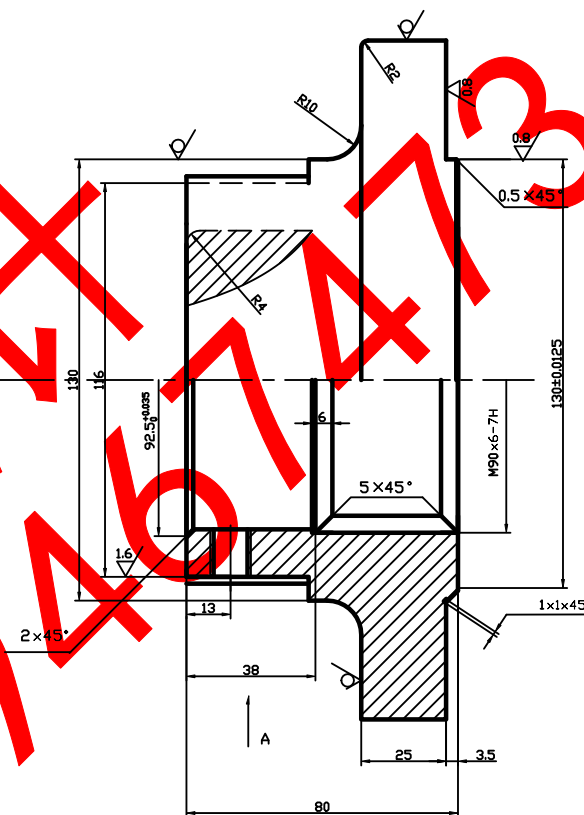
Note: 注: 锐边倒圆 (Note: Round sharp edges)

Red Watermark: 棒哥设计 29467473



注：锐边倒圆；

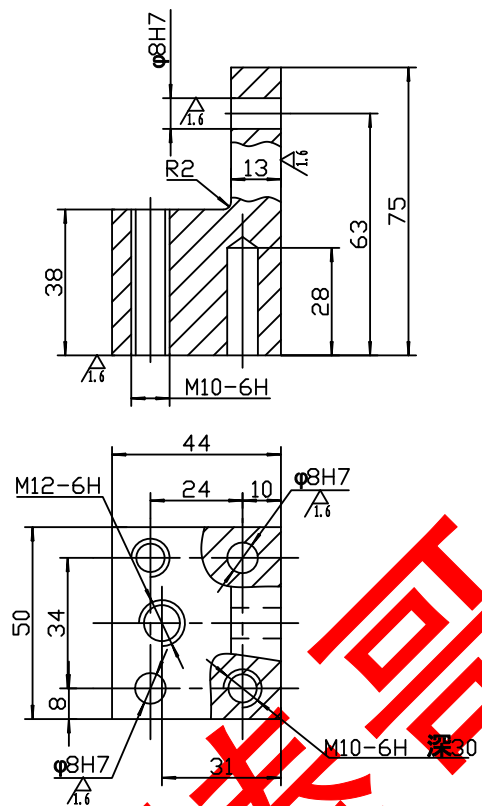
| | | | | | | | | | | |
|----|----|----|-------|----|-----|--------------|------|----|-----|----|
| | | | | | | | | | | 叉座 |
| | | | | | | | | | | |
| | | | | | | | | | | |
| 标记 | 处数 | 分区 | 更改文件号 | 签名 | 年月日 | | | | | |
| 设计 | | | 标准化 | | | | 阶段标记 | 重量 | 比例 | |
| | | | | | | | | | | |
| 审核 | | | | | | | | | 45# | |
| 工艺 | | | 批准 | | | 共 10 张 第 7 张 | | | | |



其余 $\nabla^{6.3}$

[illegible]

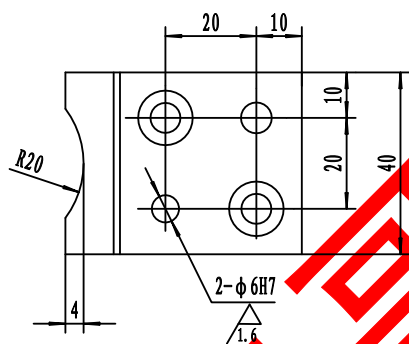
Technical drawing of a mechanical part, showing a cross-section and a top view. The part has a total height of 75 and a total width of 44. The cross-section shows a base with a width of 28 and a top section with a width of 13. The top view shows a square with a side length of 31 and a central hole with a diameter of $\phi 8H7$. The part is labeled with a thread specification M10-6H. A note indicates: 注: 锐边倒圆; (Note: Round sharp edges).



注: 锐边倒圆;

| | | | | | | | | | |
|----|----|----|-------|----|-----|---|------|----|--------|
| | | | | | |  | 定位块 | | |
| 标记 | 处数 | 分区 | 更改文件号 | 签名 | 年月日 | | | | |
| 设计 | | | 标准化 | | | | 阶段标记 | 重量 | 比例 |
| 审核 | | | | | | | | | 1:1 |
| 工艺 | | | 批准 | | | 共 10 张 第 9 张 | | | Q235-A |

Technical drawing of a mechanical part, showing a cross-section and a top view. The part features a central hole with a diameter of $\phi 12$ and a depth of 7. The total height of the part is 15. The bottom view shows a rectangular plate with dimensions 20 by 40, featuring four holes with a diameter of $\phi 6H7$ and a surface finish of $\sqrt{1.6}$. The part is labeled with a large red watermark: 精加工 29467473.



Technical drawing of a mechanical part, showing a cross-section and a top view. The part features a central hole with a diameter of $\phi 12$ and a depth of 7. The total height of the part is 15. The bottom view shows a rectangular plate with dimensions 20 by 40, featuring four holes with a diameter of $\phi 6H7$ and a surface finish of $\sqrt{1.6}$. The part is labeled with a large red watermark: 精加工 29467473.

Technical drawing of a mechanical part, showing a cross-section and a top view. The part features a central hole with a diameter of $\phi 12$ and a depth of 7. The total height of the part is 15. The bottom view shows a rectangular plate with dimensions 20 by 40, featuring four holes with a diameter of $\phi 6H7$ and a surface finish of $\sqrt{1.6}$. The part is labeled with a large red watermark: 精加工 29467473.

Technical drawing of a mechanical part, showing a cross-section and a top view. The cross-section shows a part with a central hole of diameter $\phi 15$, a total width of 25, and a fillet radius R2. The top view shows a square part with a side length of 54, a central hole of diameter $\phi 15$, and a distance of 26 from the center to the edge. The drawing includes a note: 注: 锐边倒圆; (Note: Round sharp edges;).



共 10 张 第 8 张

| | |
|---|-------|
| | 法兰盘 |
| 1 | HT200 |

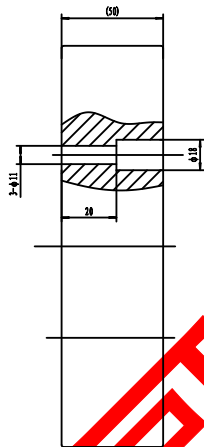
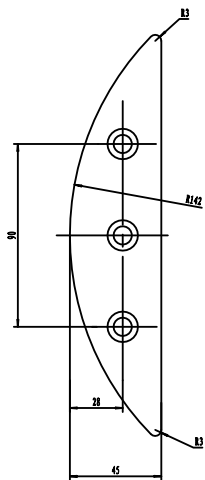
棒

其余 $\sqrt{6.3}$

29467473

共 张 第 张

配重块



注: 1. 括号尺寸按平衡要求决定;
2. 侧边倒圆。

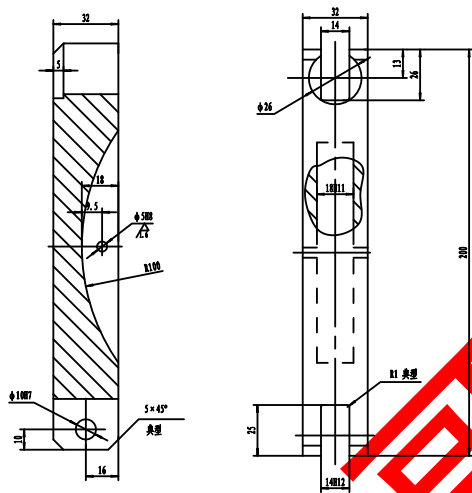
| | | | | | |
|----|----|----|-------|----|-----|
| | | | | | |
| | | | | | |
| | | | | | |
| 标记 | 处数 | 分区 | 更改文件号 | 签名 | 年月日 |
| 设计 | | | 标准化 | | |
| | | | | | |
| 审核 | | | | | |
| 工艺 | | | 批准 | | |

| | | |
|--------------|----|------|
| | | |
| | | |
| 阶段标记 | 重量 | 比例 |
| | | 1: 1 |
| 共 10 张 第 6 张 | | |

配重块

Q235-A

压板



注：侧边倒圆；

| | | | | | |
|----|----|----|-------|----|-----|
| | | | | | |
| | | | | | |
| | | | | | |
| 标记 | 处数 | 分区 | 更改文件号 | 签名 | 年月日 |
| 设计 | | | 标准化 | | |
| 审核 | | | | | |
| 工艺 | | | 批准 | | |

| | | | | |
|-------------|--|--|----|------|
| 阶段标记 | | | 重量 | 比例 |
| | | | | 1: 1 |
| 共10 张 第 5 张 | | | | |

| | |
|-----|--|
| 压板 | |
| 45# | |

40

45

12

17

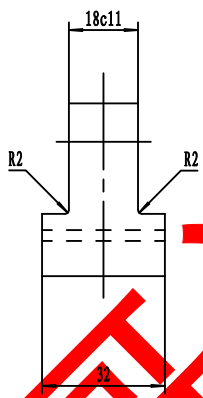
18c11

R2

R2

32

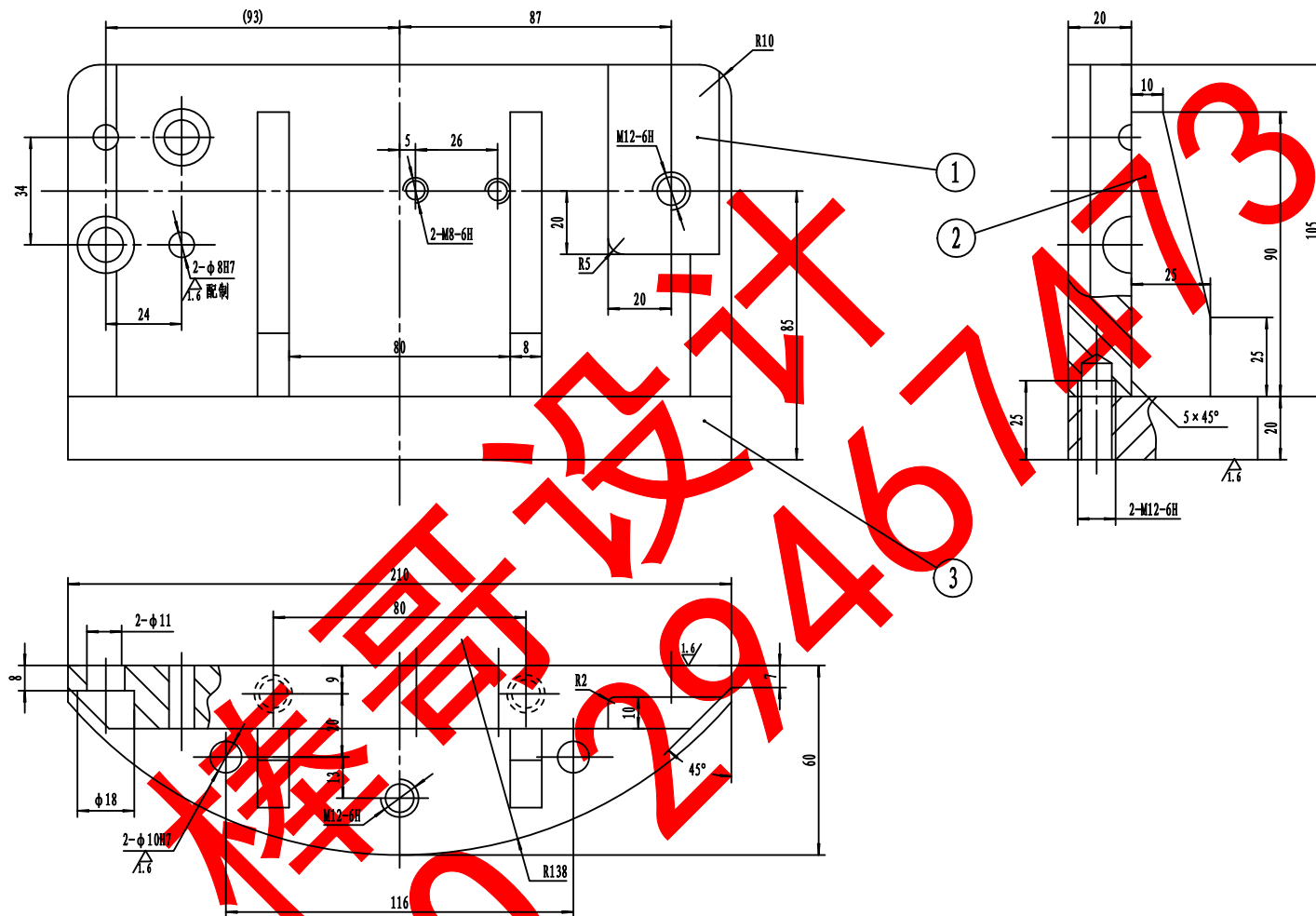
注：锐边倒圆；



共 10 张 第 10 张

45#

支座4



- 注: 1. 括号尺寸按总图协调制造;
2. 焊接结构, 焊缝未示。
3. 锐边倒圆。

| | | | | |
|--------------|-----|----|--------|----------------|
| 3 | 底板 | 1 | Q235-A | 201 × 60 × 20 |
| 2 | 加强筋 | 2 | Q235-A | 90 × 25 × 8 |
| 1 | 支板 | 1 | Q235-A | 210 × 105 × 20 |
| 序号 | 名称 | 数量 | 材料 | 尺寸 |
| 标记 | 外数 | 分区 | 更改文件号 | 签名 |
| 设计 | | | 标准化 | 年月日 |
| 审核 | | | | |
| 工艺 | | 批准 | | |
| 阶段标记 | | | | 重量 |
| | | | | 比例 |
| | | | | 1: 1 |
| 共 10 张 第 4 张 | | | | 支座 焊接件 |